



Growth
with
Goodness

adani





Growth,

the way it is
meant to be.

Growth, to us, isn't about the businesses we're involved in. Growth is about the real impact we can create. It's about the lives we can touch, the communities we can nourish, and the future we can inspire. With our sheer size of operations, we have reached out to the remotest of geographies with ease. Be it power transmission, solar energy generation, or agri-logistics, we go for large-scale execution that benefits millions of Indians. We are proud of this quality of our operations, which we have consciously extended beyond our businesses to impact healthcare, education, employment generation, and the creation of sustainable livelihoods for the communities that deserve them. We believe that growth can lead to goodness that inspires and drives us.

**Not India's
largest
integrated
organisation,
but India's
largest
goodness
creators.**

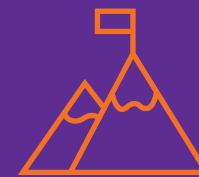
Racing ahead of others can surely reserve the apex seat, but how far will it take us? This is a question that keeps surfacing in our retrospection. We believe that the Adani Group is not just in the business of Resources, Logistics, Energy, and Agri. Rather, it strives to transform lives by creating opportunities for employment and a sustainable livelihood, using our business as the medium to attain these goals of goodness. For us, the title of the largest integrated organisation doesn't ring a bell; the day we come to be known as the largest changemakers is the day we will achieve our purpose, philosophy, and vision of Nation Building. We want our achievements to become a beacon of goodness, moving lives, bridging oceans, and bringing the world closer to millions. We believe our efforts, unless they enlighten lives, are futile. We are headquartered in Ahmedabad, India, and have operations across the world. We owe our success and leadership position to our core philosophy of Growth with Goodness.

**To bring goodness to the world,
it helps to start with yourself.
Our vision and values define this goodness.**



Vision

To be a world-class leader in businesses that enrich lives and contribute to nations in building infrastructure through sustainable value creation.



Courage

We shall embrace new ideas and business



Trust

We shall believe in our employees and other stakeholders



Commitment

We shall stand by our promises and adhere to the highest business standards

When it comes to choosing a path towards growth, we choose the sustainable one.

At Adani Group, sustainability goes beyond a tick-in-the-box. It is an essential step towards the future and our goal of Nation Building. Every partnership, every investment, and every initiative at the Group has been established keeping sustainability at the heart of our approach. In alignment with these beliefs, we express our commitment to the Sustainable Development Goals (SDGs) set by the United Nations with a focus on areas in which the Group is uniquely positioned to create sustained and scalable impact.

For each of our businesses, we aim to be sector leaders in ESG metrics. We have undertaken a rigorous mapping of our emissions and environment-related metrics for all our businesses and will adhere to transparency in our environmental footprint and actions through globally reputed disclosure and validation platforms.

To reiterate our commitment to sustainability, we are continuously investing in the identified ESG material topics. Our investments are aligned with long-term national policies. Our aim is to use the best possible technologies and resources to create solutions that not only bring growth but goodness as well.

The growth at Adani portfolio companies is being shaped and influenced by the highest standards of responsibility across various aspects of our operations.

ESG Thrust Areas

Social

- Our people
 - Talent attraction and development
 - Diversity and inclusion
 - Health, safety, and wellbeing
 - Human rights
- Sustainable supply chain
- Community engagement
- Customer relations

Environment

- Emission mapping and management
- Climate change and energy

Key Achievements:

- 36.7 million tonnes, cumulative CO₂ avoided by AGEL
- 98% packaging material used in AWL's FMCG business is recyclable
- 8443 MT tonnes of plastic waste collected under Extended Producer's Responsibility (EPR) by AWL
- 6 ports certified as Zero Waste to Landfill
- Ambuja cement co-processes wastes from agricultural, industrial, and municipal sectors to replace conventional fuels with alternative fuels
- Mumbai International Airport, Chennai Data Centre and Adani Solar, Mundra, are platinum-rated certified Green Buildings
- AGEL is water positive at its 200+ MW capacity sites

- Decarbonising operations and mobility
- Water stewardship
- Biodiversity
- Green transformation
- Waste Management

Governance

- Board structure, diversity, effectiveness, experience, and tenure
- Business ethics and compliance
- Code of Business Conduct
- Risk and Crisis Management
- Transparent disclosures

- Adani Solar, AWL, APSEZ, and ATL use treated sewage for watering the green areas
- Continuously increasing number of women in workforce across businesses
- Touching 7.35 million+ lives in areas of education, healthcare and livelihood
- Mumbai International Airport is using 100% green electricity
- Partnering with Ashok Leyland and Balard to make hydrogen-fueled electric trucks for mining operations

Sustainable Development Goals



Going Forward: Adani's ESG Commitments

- AGEL to become world's largest renewable power generating company by 2030
- AdaniConnex and Airports to be Net Zero by 2030; ATL, Ports, AGEL, and ATGL to be Net Zero by 2050
- Grow 100 million trees by 2030
- Increase in uptake of renewable energy across businesses
- Replace conventional vehicles to EVs or cleaner fuels
- First Indian Data Center Company to power all its data centers with renewable energy
- Reduce dependence on competing water sources
- Align or exceed India's NDC target of achieving 45% emission intensity reduction
- Minimise waste going to landfills and maximise recycle and reuse

Creating immense value by keeping pace with the changing times.

Phase 1

Ports to logistics platform



14 ports in India, 9 logistics parks –Largest transport utility



15.2 GW of thermal power generation capacity



AWL has the largest range of edible oils with other FMCG items

Phase 2

Energy and gas utility platform



19,779 ckm of transmission line, including the longest HVDC line



Over 20.4 GW* of renewable power generation capacity portfolio



127 districts in the gas distribution network

Phase 3

Transformational opportunities to provide the quantum leap



7 operating airports in India



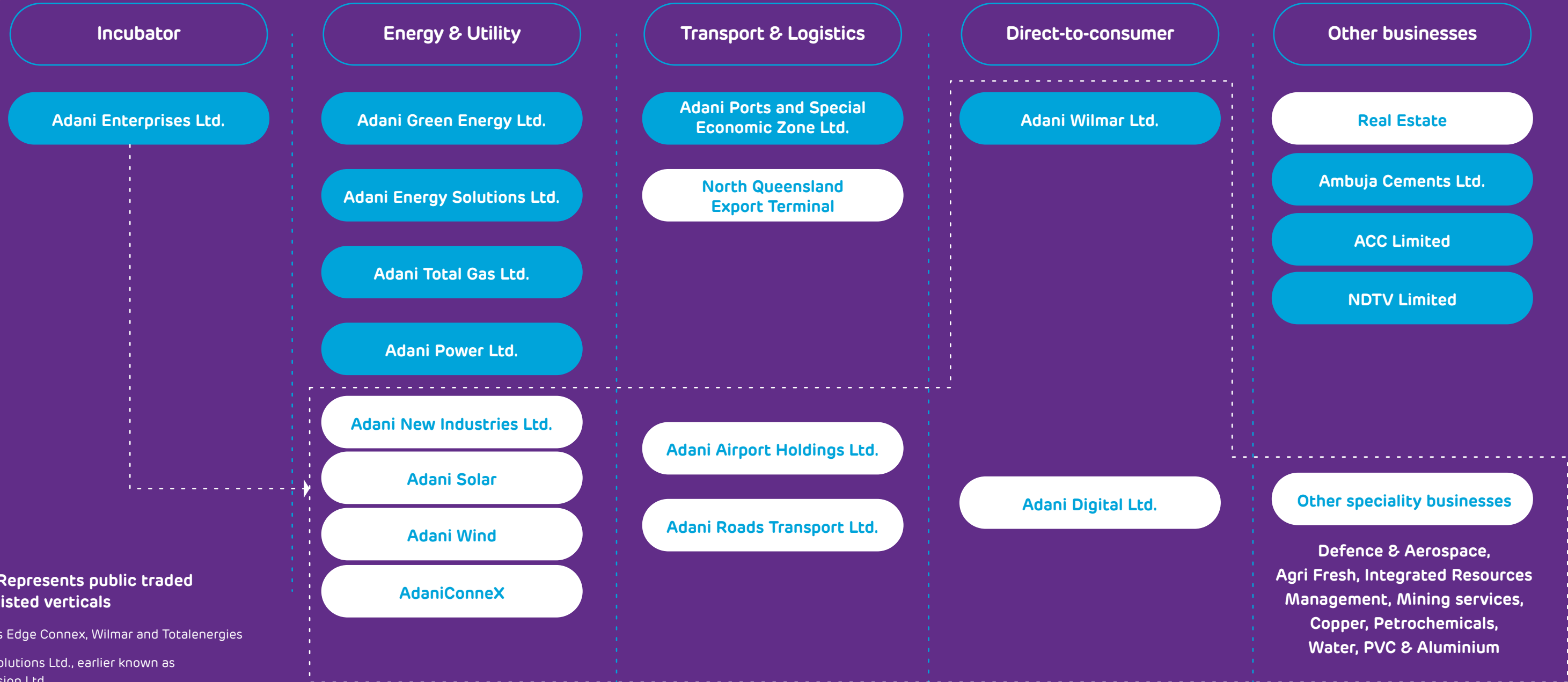
Harnessing expertise in infrastructure to cater to the growing demand of the digital economy



Wastewater treatment and desalination projects

Uplifting lives in more ways than one.

Adani Group Portfolio



*50:50 ventures Edge Connex, Wilmar and Totalenergies

Adani Energy Solutions Ltd., earlier known as Adani Transmission Ltd.

Diversifying businesses to meet our core objective of Nation Building.

The virtues of speed, scalability and sustainability are essential for any organisation to achieve excellence and growth. With our diverse businesses and global outreach, we deliver smart solutions to our customers that are rooted in each of these virtues.

Contributing to India's Growth Story - Adani Group at a glance

Diversifying businesses to meet our core objective of Nation Building.

Workforce
Over **43,000**

Renewable Power
8 GW*
Operational Portfolio

Transmission
15,731 ckm
operational as of FY23

Cargo Handled across Ports
337 MMT

Solar Manufacturing
4 GW Capacity

Edible Oil
19.5% Market Share

City Gas Distribution Volume
753 MMSCM

Agri Fresh
22,000 MT Capacity

Integrated Resources Management
88.2 MMT Operational Capacity

Thermal Power Generation
15.2 GW (excluding ATLS 500 MW)

Realty
1.5 MN. SQ. M
Spaces delivered

Cement Production Volumes
100.68 MN Tonnes
(Ambuja + ACC)

Mining Services
29.7 MMT
(Production from 5 mines)

Passengers Handled at Airports
74.8 MN

Ports and Logistics | Power | Transmission | Renewables
Natural Resources | Agri Logistics | Edible Oil | Gas Distribution
Real Estate | Defence and Aerospace | Roads, Metro, Rail, and Water
Data Center | Airports | Agri Fresh | Cement

Note: Figures as per Annual Report FY23 | *Operating Capacity as on March 2023



Adani Green Energy Ltd.

An environment free from carbon emissions, where every child can grow up breathing pollution-free air, is what we dream of creating, having, and managing to enrich lives with our renewable energy plants. Adani Renewables (Adani Green Energy Limited) is one of India's largest renewable energy companies, pioneering an effort to help India transition to renewable power generation. We develop, build, own, operate, and maintain utility-scale grid-connected solar and wind projects. The electricity produced is supplied to central and state government entities and government-backed corporations. Currently, AGEL has an energy portfolio of over 20.4 GW with over 8 GW operational portfolio, 10 GW of portfolio under construction, and 1.8 GW portfolio of near construction — the largest renewable energy portfolio in India.

Verticals:

Solar Energy

Wind Energy

Hybrid Energy



Solar Energy

Nearly half a decade ago, we were the fastest of the starting blocks, having set up the largest solar power plant in the world at Kamuthi in Tamil Nadu.

AGEL's pursuit of growing our renewable portfolio has been second to none. We are probably driving one of the fastest-ever decarbonisation programs, given our existing footprints and robust pipeline. Our vision is to become the world's largest solar power company by 2025 and the largest renewable power company by 2030. Our existing portfolio of renewable power-generating assets stands at over 8 GW, which is expected to increase with organic and inorganic growth plans.

The Adani Group has committed to investing over 70% of its budgeted Capex of the energy vertical into clean energy and energy-efficient systems. As a testimony to our commitment, our renewable energy portfolio in FY-22 was 5410 MW, which saw a 49% growth yearly, resulting in 8 GW in FY-23, which makes AGEL have the largest operational renewable portfolio in India. The French energy major TotalEnergies investment to acquire a 50% stake in an entity housing 2353 MW of operational solar projects is a testament to the fact that AGEL is the most reliable and futuristic renewable company in India.

Wind Energy

Harnessing the power of wind energy can provide RE power to the grid throughout the day with a relatively higher CUF. We develop, build, own, operate, and maintain utility-scale grid-connected wind farm projects and generate revenue through the sale of electricity to central and state government entities and government-backed corporations.

For wind project development, we continuously evaluate various regions of the country for wind

resource potential. We have already installed many wind-masts across India in resource-rich areas of our country. This has allowed us to confirm the site's wind resource potential and enabled micro-siting.

The adoption of higher-efficiency machines, farm-level aggregation of wind machines, advanced algorithms for resource identification, and optimisation of last-mile connectivity of wind turbines has led to enhanced efficiencies.

Hybrid Energy

Variability in solar and wind generation has emerged as a concern in the large-scale adoption of renewables since it contributes a major share of the energy mix. The hybridisation of wind and solar plants is a developing solution that will reduce this variability due to the complementary nature of their generation profile: solar generation is higher during the day, while wind generation can be higher at night.

Hybrid projects would have much higher capacity utilisation, thus removing the intermittency challenge. Such projects also enjoy the additional benefit of reduced costs associated with sharing transmission lines. AGEL's approach of thorough inspection to identify good locations for hybrid energy and to create a proactive transmission plan alignment with in-depth insights about resource and generation potential has made it the largest hybrid portfolio owner in the country.

As a part of the massive addition of 2676 MW of operational renewable capacity in FY 23, AGEL has operationalised 2140 MW of Wind-Solar Hybrid Power Plants in Rajasthan, India's first and world's largest solar-wind hybrid cluster.

Our USPs



Deep know-how of regulatory landscape



Well-established relationships across the energy ecosystem



Timely execution of large or complex assets



Operational expertise



Geography spread



Competitive project cost



Adani Ports and Special Economic Zone Ltd.

Everyone has a growth story. But when these stories result in the upliftment of the lives of farmers and their families, or small-scale businessmen and their customers, the nation and its future advances into a story of goodness.

Adani Ports and Special Economic Zone Ltd. is bridging India to the world, erasing all limitations of geography with faster and more efficient movements.

Verticals:

Ports

Logistics

Agri Logistics

SEZ

Dredging

Marine Services

Oil & Gas Terminaling Services



Ports

Adani Ports and Special Economic Zone Limited (APSEZ) is India's largest commercial port operator, contributing to the country's growing trade. It's spread across seven maritime states – Gujarat, Goa, Kerala, Andhra Pradesh, Maharashtra, Tamil Nadu, Odisha – giving it a national presence. The port facilities are equipped with the latest cargo-handling infrastructure, which is both best-in-class and capable of handling the largest vessels calling at Indian shores. Our ports can handle diverse cargo: dry cargo, liquid gas, crude, and containers.

Additionally, APSEZ has expanded its international presence with strategic partnerships, including a recent association with Haifa Port in Israel, further enhancing its global reach and facilitating international trade connections.

Logistics

Adani Logistics Limited (ALL) is the most diversified end-to-end logistics service provider in the country, with presence across all major markets and expertise in handling varied customers across segments like Retail, Industrial, Container, Bulk, Break-Bulk, Liquids, Auto, and Grain Handling. ALL operates 11 multimodal Logistics Parks across India. These are located at Patli, Tumb, Kilaraipur, Nagpur, Kishangarh, Malur, Taloja, Kanech (POL tank farm), Mundra, Loni, and Valvada. ALL is also setting up India's largest MMLP at Virochannagar (Gujarat). MMLPs at Patli, Tumb, Kilaraipur, Nagpur, Loni, and Valvada are also notified as Inland Container Depots (ICDs) for handling and customs clearance of EXIM cargo. Further, MMLP Malur has already received a Letter of Intent from CBIC for the setting up of ICD. ALL operates 94 rakes (43 container, 41 GPWIS, 3 AFTO, and 7 Agri Rakes), 1.6 Mn sq ft of warehousing space, 6,000+ containers, 1.1 million metric tonnes of grain silos, and 900 trailers and tipper trucks.



Agri Logistics

Those who feed us deserve their fair share. We, at Adani, ensure that farmers get their due credit for every drop of sweat they've shed in generating the best-quality produce for the nation. We rely on our scale to bring about this goodness. Adani Agri Logistics is a pioneer in bulk handling, storage, and transportation (distribution) of food grains and provides an end-to-end bulk supply chain solution to the Food Corporation of India and various state governments. Eighteen storage infrastructure facilities are currently operational across India with a storage capacity of 1.1+ MMT annually. The business connected major foodgrain-producing states (Punjab, Haryana, and Madhya Pradesh) with consumption centres in Karnataka, Tamil Nadu, Maharashtra, West Bengal, and Gujarat through a pan-India network of procurement and distribution silos.

SEZ

Spanning an area of 15,000 hectares and located on India's vibrant west coast in the industrialised and investor-friendly state of Gujarat, the Mundra Economic Hub is the gateway for Indian exports and imports. It is India's largest port-based multi-product manufacturing zone.



Dredging

APSEZ currently owns 28 dredgers, boasting India's largest Capital dredging capacity and a growing Maintenance Dredging fleet. Well-maintained dredgers, highly motivated and trained personnel, in-house innovative workshops, dry dock facilities, and survey support are vital strengths that enable our efficient operations.

Marine Services

The Adani Harbour Services Ltd. Adani Ports and Special Economic Zone Ltd. specialises in Harbour Towing Services through Adani Harbour Services Limited (TAHSL) and Ocean Sparkle Limited (OSL). Our companies are renowned players in the global Towing Market, boasting a significant fleet size of advanced ASD (Azimuth Stern Drive) Tugboats.



Oil & Gas Terminating Services

IndianOil Adani Ventures (formerly known as Indian Oiltanking), headquartered in Vikhroli (Mumbai), is a midstream infrastructure service and solution provider to the Oil, Gas, and Chemical industries with domain expertise in Build Capabilities (EPC), Terminating Services, and Renewable Energy. Since its inception in 1997, the company has combined the strength and reputation of its parent companies, Indian Oil Corporation (IOC) and Adani Ports and SEZ (APSEZ), to provide customers with unparalleled logistics services and technical solutions.





Adani Energy Solutions Ltd.

Transmission

The aim of goodness is not attained by ensuring unlimited availability of power but by generating happiness and creating a sustainable living for people affected by it while maintaining a greener environment for generations to come. Adani Energy Solutions Ltd. (AESL), earlier known as Adani Transmission Ltd., is one of the largest private sector power transmission companies in India with a presence across the western and northern regions of the country. The company has been working towards helping people realise their dreams, no matter what time of day it is. We primarily aim to address the vast potential in India's transmission sector. We currently operate more than 15,371 ckm of transmission lines and around 26,265 MVA of power transformation capacity. We have invested in the latest technologies, resulting in the highest network availability of over 99.70% in the country, which corresponds to the best global standards.

Electricity

A brighter future or a hopeful ambition, the path towards empowerment or yet another lit kitchen, is when the fruits of growth are sweeter than growth itself, and goodness fuels the journey forward. Adani Electricity Mumbai Ltd. (AEML), a majority-owned subsidiary of Adani Energy Solutions Ltd., is into Power Generation, Transmission, and Retail Electricity Distribution. It serves over 12 million consumers spread across 400 sq. km in Mumbai and its suburbs with 99.9% reliability, one of the highest in the country. In the maximum city, dreams run the show, and for millions of Mumbaikars, the fast-paced life contrived to realise them is powered by an uninterrupted supply of electricity. As Mumbai's largest and most efficient power distribution network, Adani Electricity meets close to 2,000 MW of power demand. It provides world-class customer care services with the help of advanced technologies. Adani Electricity plans to expand its presence in newer geographies in pursuit of India's vision of 'Power for All.'



Adani Power Ltd.

What more can power do than light up houses? It can brighten the future, not just of individuals but of communities at large, thereby creating a growth story ramifying throughout the country, one smile at a time. We, at Adani Power, remain at the forefront of addressing the nation's increasing demand for energy. For us, building a sustainable future isn't just about achieving business objectives; it's more about the impact we can create and the lives we can light up.

Adani's thermal power portfolio comprises 15.2 GW across eight plants at Mundra, Tiroda, Kawai, Udipi, Raipur, Raigarh, Mahan, and Godda. It makes the company India's largest private sector thermal power player. The power generated here is witnessing businesses grow, literacy rise, and livelihoods flourish. For the world's first company capable of setting up a coal-based supercritical thermal power project registered under the Clean Development Mechanism (CDM) of the Kyoto Protocol, this is just the beginning of the continuing journey of goodness.



Adani Total Gas Ltd.

Life feels no less than a celebration when one can return home to piping hot comfort food after a long day at work. We make this joy possible with our network of over 8,000 km of pipeline distributing gas to kitchens across the country. With over 7,435 industrial and PNG connections, 7,07,755+ households, and 460+ CNG stations, Adani Total Gas Ltd. is one of the largest private sector CGD players in India with significant growth opportunities. A focused 'Pure Play Gas Marketing and Distribution' entity, with its expanding pipeline network, promises to fuel the growing aspirations of the nation.

Verticals:

Residential PNG

Commercial PNG

Industrial PNG

* ATGL is a 50:50 venture between Adani Gas and TotalEnergies.



Adani Enterprises Ltd.

Growth is entitled to change, but the goodness that it shapes is everlasting. Adani Enterprises Limited, the flagship entity of the Adani Group, by operating as the fastest-growing, diversified Group with business interests across natural resources, edible oil, defence and aerospace, airports, data centres, and solar module manufacturing, is ensuring the impact trickles down to the remotest corners of the country. When electricity reaches every household through the timely availability of resources, access to basic necessities is enjoyed the way it is meant to be, and a farmer is able to feed his family heartily only because he gets his fair share for delivering quality food grains, which is stored and distributed most efficiently while providing a healthy cooking medium. Through Defence and Aerospace, we are committed to helping India achieve self-reliance in defence and security. Turning India's transit gateways into world-class destinations, we are committed to offering the best-in-class airport infrastructure to passengers, ensuring the most seamless and secure airport experience. For us, the nation is brimming with opportunities that can help bring about change. In doing so, we contribute to the creation of a better world.

Verticals:

Integrated Resources Management

Natural Resources

Adani Wilmar*

Agri Fresh

Defence and Aerospace

Roads, Metro, Rail, and Water

Solar Manufacturing

Airports

Data Centre**

Bravus Mining and Resources (Australia)



Solar Cell and Module Manufacturing

Contributing to the nation's journey of becoming self-reliant in terms of Energy Security, Adani Group ventured into what is known to be the pathway to a greener world, Solar, in 2017. Since Adani Solar's inception in 2017, we have consistently been India's 1st, largest, and most trusted vertically integrated Solar PV cells and modules manufacturer from 1.2 GW to 1.5 GW in 2019, 2 GW in 2021, and 4 GW in 2023.

Currently, the plant produces high-efficiency Bifacial and MonoPERC modules of M10 and G12 footprints with a Power class of 535-660W, a module efficiency of 21-22%, and a target Bifaciality of 75%. We are also coming up with our solar PV Modules with TOPCon technology in 2023 and other emerging solar module technologies in the future.

Now, we are building the World's 1st ever Fully Integrated and Comprehensive Ecosystem of 10 GW Solar PV manufacturing — an ecosystem that is not only vertically integrated from MG silicon to PV Modules but also hosts all ancillary units (like EVA, Backsheet, Aluminium Frame, Glass, Junction Box, Trackers, etc.) in the same geography, i.e., in Mundra.



Adani Wilmar Limited

Adani Wilmar Limited (AWL) is a joint venture incorporated in January 1999 between the Adani Group, India's fastest-growing diversified portfolio of businesses, and Wilmar International Limited, Singapore, Asia's leading agribusiness group. Adani Wilmar Limited is a newly listed company from Adani Enterprises Limited and is one of the fastest-growing food FMCG companies in India. The company has the most extensive range of edible oils, spanning the categories of Soya, Sun, Mustard, Rice bran, Groundnut, Cottonseed, and functional oils. Besides edible oil, AWL has also forayed into packed Basmati Rice, Pulses, Soya Chunks, Besan, Sugar, and Wheat Flour. The company has extended its offering with the introduction of soap under the Alife brand. The product portfolio of Adani Wilmar spans various brands along with their flagship brand – Fortune. Adani Wilmar Limited also caters to institutional demand through its industry essential range, which includes bulk packs of consumer essentials, Lauric & Bakery fats, Castor Oil derivatives, Oleochemicals, and Soya value-added products.



Agri Fresh

Adani Agri Fresh established its presence in the farming sector through world-class packaging operations and storage facilities in Himachal and a hi-tech farming setup in Gujarat. These services ensure the selection of only the highest-grade fruit for storage and consumption. We have pioneered the controlled atmosphere storage technology for apples, transforming the apple growing and storage ecosystem in Himachal Pradesh. This business model has helped apple farmers across the state create for themselves a flourishing livelihood. Adani Agri Fresh is also into retailing fresh fruits under the brand name 'Farm-Pik', with a strong grower base.



Natural Resources

Our journey began with the goal of assisting the nation in meeting its long-term energy needs and achieving self-reliance in providing critical inputs for the economy and industry. Presently, our business is versatile and dynamic, encompassing a range of industries, including Mining (Coal, Iron-Ore, Bauxite, and Limestone), Trading (Integrated Coal Management, Bunkering, LPG, and ATF), and Metals (Copper, Aluminum, and Integrated Iron-Ore). Our commitment is to promote sustainable practices through mining, manufacturing, and trading, all aimed at building a brighter and better India.

To fuel our growth consistently, we have established a high-performance work culture. People, Processes, Infrastructure, Networks, IT & Technology, and Analytics have been some of the key enablers for the same.

Our Group believes in 'Growth with Goodness' and is committed to sustainable and socially responsible activities in the geographies where we operate. We go beyond compliance to set industry benchmarks by contributing to communities and ecology. For us, maximising shareholder value is essential, but nurturing social value is far more critical. An equitable and sustainable future is our driving force.



Defence and Aerospace

Based out of its headquarters in Ahmedabad, Adani Defence & Aerospace is now a global pioneer in defence manufacturing, surveillance, and aerospace MROs.

The organisation specialises in designing, researching, developing, manufacturing, integrating, and maintaining high-tech systems, products, and services to ensure national security and keep vital information and infrastructure secure.

Our products and services are trusted worldwide, ranging from small arms and ammunition to unmanned aerial vehicles, counter-drone systems, missiles, and

aircraft services. We take pride in providing safety and security to people around the world.

We have partnered with Indian startups and MSMEs committed to the Atmanirbhar Bharat initiative, aiming to develop a domestic defence ecosystem with an export-orientation mindset and the best-in-class processes and quality management systems.

Our objective is to ensure that those we serve, stay ahead of time and remain prepared for any untoward contingencies. We are committed to delivering excellence in everything we do.

Airports

The Adani Group forayed into the civil aviation sector with a vision to leverage its rich experience of building stellar infrastructure to transform Indian airports. In 2019, it won the mandate to modernise and operate the Airports Authority of India-run airports in six cities (Ahmedabad, Lucknow, Jaipur, Thiruvananthapuram, Guwahati, and Mangaluru) for 50 years as a concessionaire. Subsequently, it took over the control of six of these airports and has a majority stake in Mumbai International Airport Limited, which includes the mandate to build the Navi Mumbai International Airport. With eight airports in its management and development portfolio, AAHL is one of India's largest airport infrastructure companies, accounting for 25% of airport footfalls and controlling 33% of India's air cargo traffic. Collectively, Adani caters to more than 80 million passengers per annum.

Airports presence across India:

Ahmedabad | Thiruvananthapuram | Lucknow | Mangaluru | Guwahati | Jaipur
Mumbai | Navi Mumbai*

*Navi Mumbai International is a greenfield project currently under construction phase.

Rugby Run Solar Farm

Rugby Run Solar Farm is part of the Adani Group's world-leading renewable energy portfolio that is helping progress the global transition to a lower emissions future. Located near the town of Moranbah in central Queensland, Australia, Rugby Run generates 185,000 MWh of power each year. The facility has been consistently among Australia's best-performing solar-energy assets since it was switched on in October 2019.



North Queensland Export Terminal

The North Queensland Export Terminal (NQXT) is a dedicated deep-water coal export terminal that services and supports Australia's significant resources sector and the central Queensland community of Bowen in which it operates.

The NQXT has a nameplate capacity of 50 million tonnes per annum and provides strategic export access to nearly a dozen major resource production companies, and operates in the Bowen Basin or the Galilee Basin.

The Bowen and Galilee basins are among Australia's most significant resource provinces. The NQXT has been operating safely, responsibly, and efficiently within the Port of Abbot Point since 1984. Today, Abbot Point Operations (APO) manages the operations of the NQXT.

Both NQXT and APO are part of the Adani Group's Australian businesses, delivering integrated energy and infrastructure services under the Bravus banner.

Bowen Rail Company

Bowen Rail Company is part of the Adani Group's Australian businesses, delivering integrated energy and infrastructure services under the Bravus banner.

The Bowen Rail Company connects Queensland's high-quality resource producers to the North Queensland Export Terminal and international markets. The business' operations support the community of Bowen and drive economic prosperity for the nation.

The Carmichael Rail Network is an approximately 200-kilometre multi-user railway that connects central Queensland's Galilee Basin mining region to the Newlands rail line and the North Queensland Export Terminal. The Bowen Rail Company is the rail operator on the Carmichael Rail Network, and Bravus Mining and Resources' Carmichael mine was the railway's foundation customer.

The railway was designed to carry 40 million tonnes per annum and has the capacity for further expansion.



Bravus Mining and Resources

Bravus Mining and Resources owns and operates the Carmichael coal mine in the Galilee Basin in central Queensland, Australia.

The Carmichael mine is an open-cut thermal coal mine that produces in the order of 10 million tonnes of coal each year for the export market. Bravus Mining and Resources has a focus on local jobs and procurement, and the majority of the more than 1000 people that work at the mine are from regional areas of Queensland.

Bravus Mining and Resources is committed to respecting the environment, and the business has some of Australia's most comprehensive environmental plans and strategies in place to ensure healthy air, land, and water in the area of the Carmichael mine.

Bravus Mining and Resources likewise supports its local communities, especially Indigenous Traditional Owners who work in partnership with the mine under rigorous Cultural Heritage Management Plans to preserve any important cultural sites and practices.





Ambuja Cement plant
at Bhatapara, Chattisgarh

Ambuja Cements Ltd.

Ambuja Cements Limited is among India's leading cement companies, and along with its subsidiary ACC Ltd. has a capacity of 67.5 million tonnes with 14 integrated cement manufacturing plants and 16 cement grinding units across the country. Ambuja has provided hassle-free home-building solutions with its unique sustainable development projects and environment-friendly practices since it started operations.



ACC Ltd. cement works plant at
Barmana, Himachal Pradesh

ACC Limited

ACC Limited is India's leading producer of cement and ready-mix concrete. It has 17 cement manufacturing sites, over 88 concrete plants, and a nationwide network of channel partners to serve its customers. With a world-class R&D centre, the quality of ACC's products and services, as well as its commitment to technological development, make it a preferred brand in building materials. ACC is the first Indian Cement Company to sign the Net Zero Pledge with Science-Based Targets.

NDTV Limited

New Delhi Television (NDTV), the newest addition to the Adani portfolio, has revolutionised news television and digital journalism in India for over 25 years. With its influential channels, NDTV 24x7 and NDTV India, alongside the dynamic ndtv.com, NDTV has become the most watched, credible, and respected news network in the country, setting industry standards. NDTV takes immense pride in its real-world impact and its powerful reach, using its platform to advocate for and stand with the people of India.





Realty

Your dream life lies beyond the carpet area of, what you believe is possible.

Adani Realty is the real estate arm of India's leading infrastructure and development entity, Adani Group. With a commitment to getting India on par with the most advanced countries around the world, we have begun development in our most promising cities, integrating the finest design aesthetics with cutting-edge construction technology. As part of the Adani Group, we have a legacy of Trust and Excellence that we live up to, a fact that has driven us to achieve a lot in a relatively short period of time. Adani Realty has been developing residential, commercial, and social club projects of over 2.4 million square metres in aggregate in Ahmedabad, Mumbai, Pune, and Gurugram. We aim to revolutionise real estate, keeping in mind the varied aspirations and lifestyles of new-age India. Set apart by an abundance of land for development, meticulous planning, intelligent use of technology, and speed of execution, within a little over 12 years of our inception, we have delivered over 1.5 million square metres of space to more than 7,000 families. Our vision is perfectly encapsulated in our philosophy of The Good Life, in which we have conceptualised lifestyles inspired by your biggest dreams and closest relationships. We have been recognised as one of Asia's top 100 brands and are committed to becoming one of India's leading superbrands in the realty sector.



Venturing into new avenues

- Data Centre
- Road, Metro, Rail, and Water
- Digital
- Copper
- Petrochemicals
- Green Hydrogen



Data Centre

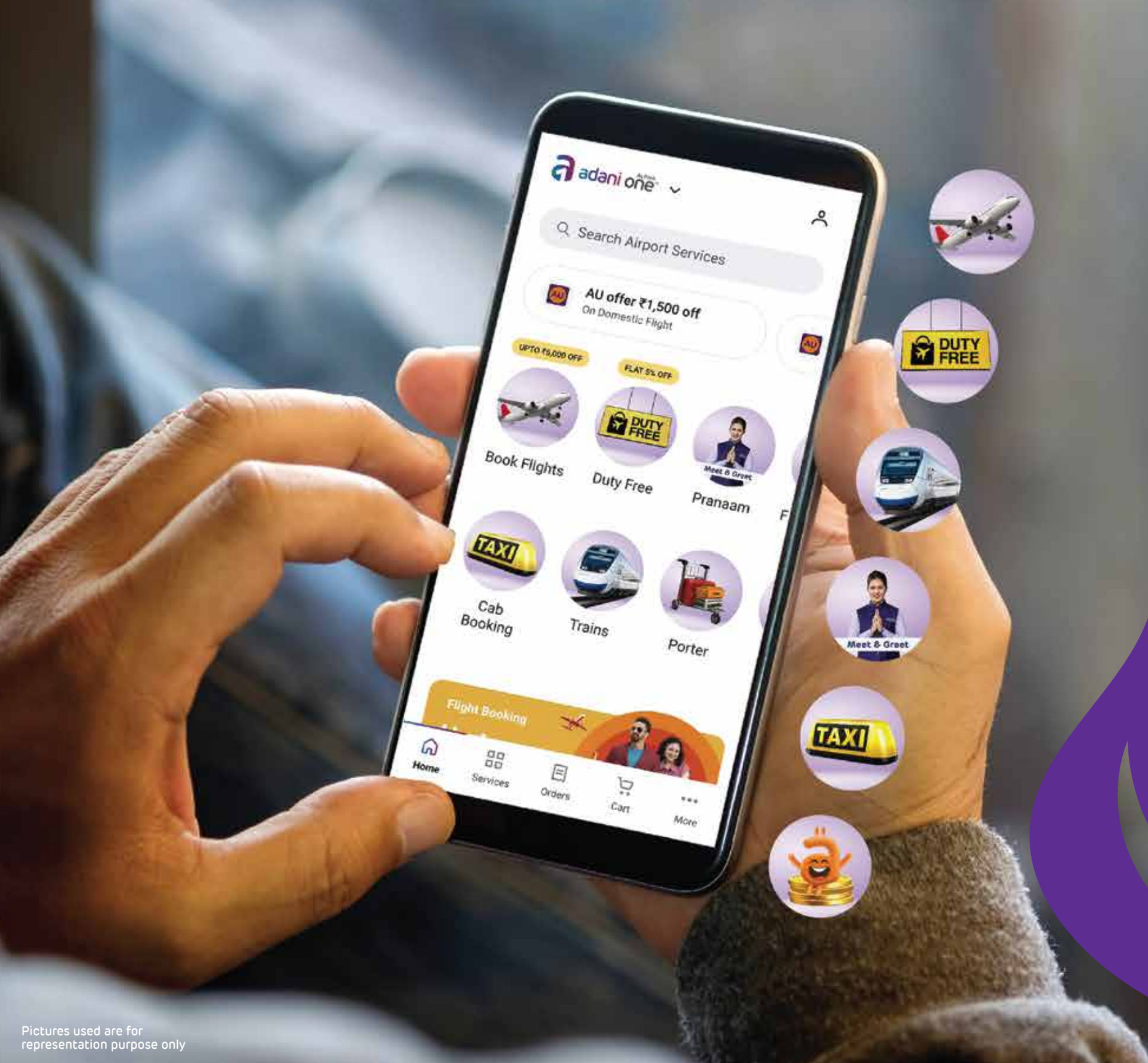
As India's internet economy continues to surge, there is an increasing need to build data centres to ensure seamless, uninterrupted data consumption and storage.

The growing smartphone subscribers with rising monthly mobile data traffic, coupled with rising broadband penetration and increasing digital transactions per year - will create an enormous need to collect, store, process, and distribute data.

We partnered with EdgeConneX, a company with a decade's experience serving global cloud service providers in mature markets and a flexible mindset to adapt to the local requirements when entering new geographies. The two companies' complementary strengths will help disrupt the industry with unprecedented scale, speed, and quality.

Adani Enterprises Ltd. (AEL) is the only company with the inherent capabilities to build data centres across the country. At AEL, we offer competitive advantages, namely:

- Complete ownership of large land parcels across the country
- Project management capabilities and resource availability
- End-to-end power value chain (generation, transmission, and distribution)
- Fibre connectivity and strong network connectivity
- Renewable power generation to ensure sustainability
- Strong policy advocacy credentials
- As a part of our initial plan, we intend to build data centres in the NCR, Mumbai, and Chennai.



Adani One is a truly seamless digital travel platform. It brings all travel services to the customer for a hassle-free experience. The platform aims to create passenger satisfaction through phygital engagement.

A single click lets a user conveniently choose from a range of unique offerings like Shopping at Duty Free, Pranaam Meet and Greet Service, Flight, Train, and Cab Booking, etc. Also, the Adani Rewards Loyalty Program offers users Reward Points on almost all transactions on the platform. The collected points can be redeemed for subsequent transactions. It is Adani One's way of showing gratitude to its valued customers.

With the growing popularity and inherent benefits of phygital assets, Adani One has plans to integrate multiple travel services. It has the potential to become the go-to travel platform for India, making it a true game changer in the digital travel ecosystem.

Road, Metro, and Rail

To continue our nation-building efforts, we remain committed to building infrastructure to boost India's socioeconomic growth. With multiple infrastructure businesses established across India, we leverage our project management expertise to create synergies for Road, Metro, and Rail infrastructure development. Adani Group is confident about positioning itself as a dominant player in the Road, Metro, and Rail sectors with its extensive experience in developing infrastructure for National Highways, Expressways, Tunnels, Metro-Rail, and Railways. Adani Road Transport Ltd. has already bagged 14 projects with more than 5,000 lane kms spread over ten states in India, i.e., Chhattisgarh, Telangana, Andhra Pradesh, Madhya Pradesh, Kerala, Gujarat, West Bengal, Odisha, Uttar Pradesh, and Maharashtra. The company has also recently acquired the Maharashtra Border Check Post Network Ltd., which comprises 24 Border Check posts in Maharashtra.

Water

Water remains an integral part of sustainable development initiatives. With growing concerns about the supply and availability of water resources, policymakers are focusing on infrastructure projects that aid its conservation. Adani Water Ltd. has already bagged and executing two projects under prestigious "Namami Gange, One city One Operator" framework in Prayagraj, Uttar Pradesh and Bhagalpur, Bihar and one Lift Irrigation Project in Madhya Pradesh. The Company is also focusing on opportunities in Wastewater Treatment, Irrigation Infrastructure Development, River interlinking Projects, Large Water Supply and Water Distribution Projects, and Desalination Projects to produce potable water for general consumption or industrial use.





Green Hydrogen

Adani Group will focus on integrated renewable energy generation through solar and wind energy capacities. These initiatives will power electrolyzers to produce green hydrogen. Adani Group will create a pipeline to transport green hydrogen from Khavda to Mundra for manufacturing downstream products.

Pictures used are for representation purpose only

Petrochemicals

The Adani Group is exploring opportunities to develop a petrochemical cluster at Mundra. There will be a growing opportunity to consume green fuels and moderate the national carbon footprint. We aim to produce a range of green fuels and energy to help India decarbonise quickly.

Copper

Copper demand is expected to grow due to sustained urbanisation. Adani Group (through its 100% subsidiary Kutch Copper Limited) intends to emerge as the world's largest single-location Copper smelting complex by 2030. The venture will manufacture Copper and its by-products, precious metals (Gold and Silver), and Sulphuric Acid, which can be partly converted to Phosphoric Acid. It may also lead to the exploration of value-added downstream opportunities like Copper tubes.



Adani Foundation

Goodness is a practice that ought to be ingrained in those who truly believe in it. We, at Adani, leave no stone unturned to bring happiness and livelihood at every step of our journey towards Nation Building. The Adani Group invests about 2% of its total profit in social initiatives through the Adani Foundation, its community engagement arm.

Since 1996, the Foundation has remained deeply committed to making strategic social investments for sustainable outcomes throughout India. It has been active in the core areas of education, health, sustainable livelihoods, skill development, and community infrastructure. Its strategies are rooted in national priorities and global Sustainable Development Goals (SDGs). By building institutions of people and focusing on sustainability, it contributes to the dignity, well-being, and wealth of the communities surrounding Adani businesses and beyond. The Adani Foundation's reach is extensive: it is currently operating in 5,753 villages across 19 states, positively impacting 7.3 million lives.



1. Education

In FY 2022-23, 3,094 students received free education at Adani Vidya Mandirs, 26,336 students received education in Adani Schools, and 113k children were supported through 552 Government Schools.

To facilitate holistic learning in an enabling environment, making it available and affordable to as many children as possible through smart technology and engaging partnerships, the Adani Foundation has been nurturing this mission called 'Education' through its flagship programs, viz: Adani Vidya Mandirs, Adani Schools, Utthan, and Gyanodaya.

A total of four **Adani Vidya Mandirs** are providing free education to more than 3,000 meritorious students annually from economically weaker sections of society. The schools offer best-in-class infrastructure and facilities to students, many of whom are first-generation learners, along with healthy meals, uniforms, books, stationery, and transportation. The AVM schools are currently operational in Ahmedabad (Gujarat), Bhadrashwar (Gujarat), Surguja (Chhattisgarh), and Krishnapatnam (Andhra Pradesh).

The Foundation runs 32 **Adani Schools** to impart quality education with a human touch to 26,000 students annually. This includes Adani Public School in Mundra (Gujarat), Adani Vidyalayas in Tirora (Maharashtra) and Kawai (Rajasthan), Adani DAV Public School in Dhamra (Odisha), Adani World School in Krishnapatnam (Andhra Pradesh), and Navchetan Vidyalaya in Hazira (Gujarat). Also included are 5 Ambuja Schools, 15 ACC schools, and 2 adopted schools.

Gyanodaya is a digital education initiative helping students in Jharkhand's Godda district. In collaboration with the Godda District Administration and Eckovation Pvt. Ltd., it is delivering a cutting-edge interactive curriculum to more than 82,000 students across 316 schools through smart classrooms. The project covers 230 remote and untapped villages in 9 blocks of Godda district, declared an aspirational district by NITI Ayog. The passing percentage of Class 10 students has significantly improved from 50% in 2018, when the project was introduced, to 96.59% in 2022.

Utthan aims to empower government primary schools to improve foundational literacy and numeracy among

progressive learners. An Utthan Sahayak (supplementary teacher) is appointed in each school who acts as a catalyst and facilitator. The project is reaching more than 32,000 students in 236 Government Primary schools in Gujarat, Odisha, Mumbai, and Chhattisgarh.

2. Community Health

The Adani Foundation believes that good health is critical for the development of our nation. Its vision of extending equitable healthcare services in remote locations to the underprivileged sections of society has taken the form of mobile healthcare units (MHCUs), rural clinics, hospitals, general and specialised health camps, and much more.

There are 14 **Rural Clinics and Wellness Centres** that serve 57,732 people annually. The Foundation also operates **Mobile Health Care Units** (MHCUs), providing on-the-spot medical assistance to patients in remote locations. MHCUs are armed with qualified medical professionals, generic medicines, and basic diagnostic tools. Currently, 17 MHCUs cover 7.5 lakh people, and in FY 2022-23, they provided 3.6 lakh treatments.

Health Camps provide essential screening services and generate awareness, along with necessary treatment and referrals. General and specialised camps are held for cancer screening, gynaecology, eye health, pediatrics, etc. In FY 2022-23, 490+ health camps benefitted 64,322 people.

The Adani Foundation also runs two hospitals in **Gujarat**. **Gujarat Adani Institute of Medical Sciences (GAIMS)** in Bhuj is the first Public-Private-Partnership (PPP) endeavour between the Government of Gujarat and Adani Education & Research Foundation. It is the only medical college and multi-specialty modern teaching district hospital (G.K. General Hospital) in Kutch district. In FY 2022-23, it catered to 3.56 lakh patients in the Out-Patient Department (OPD) and 40,558 patients in the In-Patient department (IPD). The **Adani Hospital** in Mundra is a 100-bed secondary care hospital catering to the healthcare needs of the local population of Mundra and neighbouring areas. It is committed to grooming medical professionals and providing clinical services at affordable rates. In FY 2022-23, it provided 46,135 OPD and 1,821 IPD services.

3. Sustainable Livelihood Development

The Adani Foundation's work is rooted in the belief that a society made of self-reliant individuals can contribute towards the well-being of their family, society, and the nation at large. We promote efficiencies in agriculture and allied activities as well as women's entrepreneurial ventures for establishing sustainable sources of livelihood. The objectives of these initiatives are to increase, diversify, and sustain the income of community members.

The programs span from skilling and offering support in market linkages to creating Self-Help Groups (SHGs) and the adoption of new and innovative techniques in crop production and animal husbandry. It also supports bringing alternate livelihoods to the fishermen's community and supporting tribal artisans.

More than 16,928 members are engaged in 1,558 community-based groups such as Self-Help Groups (SHGs), Joint Livelihood Groups (JLGs), and Farmer Producer Companies (FPCs). Each member is earning INR 3,300 per month on average, with a total turnover of INR 40 crore till date.

4. Community Infrastructure Development

The Adani Foundation is building and strengthening public infrastructure. It is dedicated to assessing community needs and aspirations for designing and providing suitable infrastructure solutions. The approach is to supplement the Government's efforts in schools, primary health care centres, large water conservation structures, construction of roads, etc. For efficient water conservation and management, the Foundation has the construction 21 check dams and revived 400+ ponds and streams across various CSR sites in India. This initiative has helped boost the water storage capacity to 10 million cubic metres, bringing more than 20,000 acres of land under irrigation.

SuPoshan: Project SuPoshan is a community-based intervention to combat malnutrition in children under five years of age and improve the nutritional status of adolescent girls and women in the reproductive age group. Village-level volunteers are identified and trained to become SuPoshan Sanginis, who play a pivotal role in spreading awareness, promoting referrals, and catalysing behavioural change. The initiative is spread across 13 states and more than 3.51 lakh households. 535 SuPoshan

Sanginis, the village-level volunteers, ensure the proper medical and social support to encourage mothers to adopt a healthy lifestyle.

Saksham: Saksham, or Adani Skill Development Programme (ASDC), is a skilling program that focuses on bridging the skill gap among the youth, making them employable, and thus contributing to nation-building. The program is in line with the Government of India's Skill India Mission. Saksham has partnered with the National Skill Development Corporation (NSDC) and has trained more than 1,25,000 young people. Its innovative courses include simulator-based crane operation, 3D printing, and welding through Augmented Reality. Currently, there are 30 Saksham centres operational across 10 states in India, offering skill training in 75+ trades.

Udaan: Project Udaan is a learning-based endeavour that specifically targets the youth of our nation. It aims to ignite the spark of ambition and aspiration within them. As part of this initiative, carefully planned exposure tours are organised, offering students a unique opportunity to visit various Adani Group sites, including Adani Port, Adani Power, Adani Airports, and Adani Wilmar facilities. These immersive trips serve as an invaluable learning experience for the students, granting them firsthand insights into the intricacies of large-scale business operations. To date, more than 4 lakh students and teachers from 6,205 institutions have participated in Project Udaan.



Group Safety Occupational Health & Safety (OH&S)

At Adani, we are committed to the highest standard of Occupational Health & Safety for our employees, business partners, contractors, and associates. It is one of the key values for us to achieve sustainable long term value creation for all our stakeholders and has enabled us to maintain consistent standards of Risk Control & Risk Acceptability across our diverse range of business portfolios – Infrastructure, Energy and Manufacturing Value Chain.

We believe that people are the most critical component in business and **"Harnessing Safety"** amongst them through "Responsible Stewardship" and "Safety Mindfulness" can facilitate in achieving a resilient organization. This is being achieved by leveraging Human Performance to Safety wherein Safety is not defined by the absence of incidents, but by the presence of capacity through working safely, reliably, and productively. This Cultural shift in Safety fosters positive culture while employees work in a complex and adaptive work environment.

#SafetyCulture

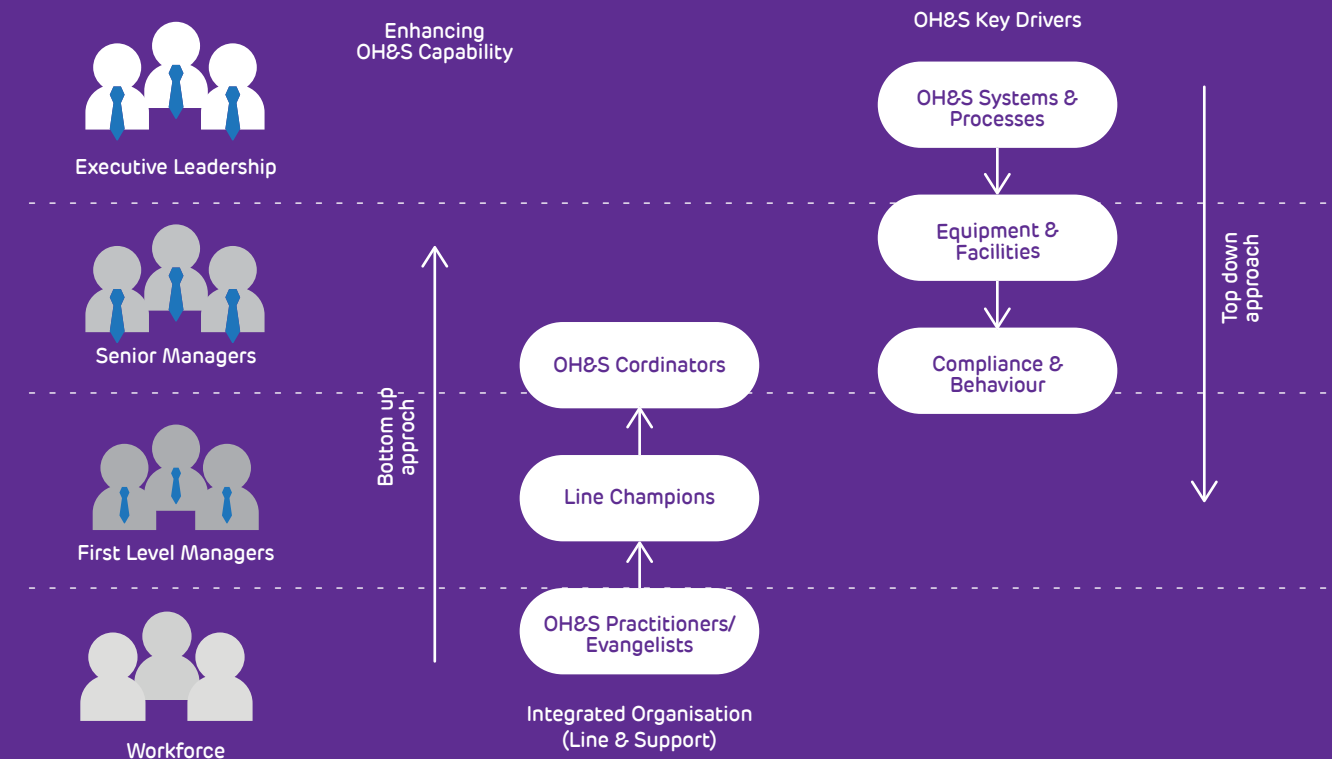
Through **"#SafetyCulture"** – our flagship brand identity for promotion of safety culture, we drive various safety engagement processes for internal and external stakeholders through national programmes - National Safety Week, National Road Safety Month, etc. as well as work towards community safety esp. school children and their teachers to foster safety consciousness.

Safety Management System & Assurance

- Integrates all OH&S management components of our businesses into one coherent system.
- Uphold ecosystem for implementing proactive & sustainable business and drives continuous improvement.
- Safety Assurance program to run diagnostics for effectiveness of safety management system and relies on assessment of safety performance, change management process and continual improvements.

Safety Excellence

Group has embarked on a transformational journey for progressing towards world class safety organization. This is propelled by the commitment & accountability of our Leadership team through 'top down & 'bottoms up' approach where we concentrate safety efforts on Bottom of the pyramid – 'last mile worker' as well as top of the pyramid – 'executive leadership' in tandem.



Awards & Accolades, 2021-22

- British Safety Council – Five Star Rating & Sword of Honour: Thermal BU
- CII Award in SHE Excellence & Innovation Awards: Renewables BU and APSEZ BU
- OHSSAI Award in Manufacturing Sector – Silver Rating: Cements
- NSCI Awards – "Suraksha Purushkar" & "Prashansa Patra": Cements
- FAME India Platinum Award – Renewables
- OHSSAI Annual HSE Excellence & Sustainability Awards – Gold Rating: RMRW BU
- OHSSAI Road Safety Award – Gold Rating: Cements



People and Culture

Our people are the key drivers of our core philosophy of 'Growth with Goodness'. As a people-centric organisation, we invest in them and empower them to create enriching careers with us. Our dynamic work environment nurtures individuality and intellectual curiosity while also encouraging creative thinking.

We believe that our workforce is our competitive advantage. Driving our vision and mission forward is a 43,000+ strong team of nation-builders that relentlessly work every single day to create extraordinary value for our customers and stakeholders. We perform with energy and enthusiasm, thrive on change, operate on trust, commitment, and courage, and leverage our team's diverse and unique talents in everything we do. We are resilient, solve problems rapidly, and are eager to take on fresh challenges every day.



www.adani.com

Adani Group
Adani Corporate House
Shantigram, S G Highway
Ahmedabad 382 421
Gujarat, India

Contact us:
info@adani.com
investor@adani.com

