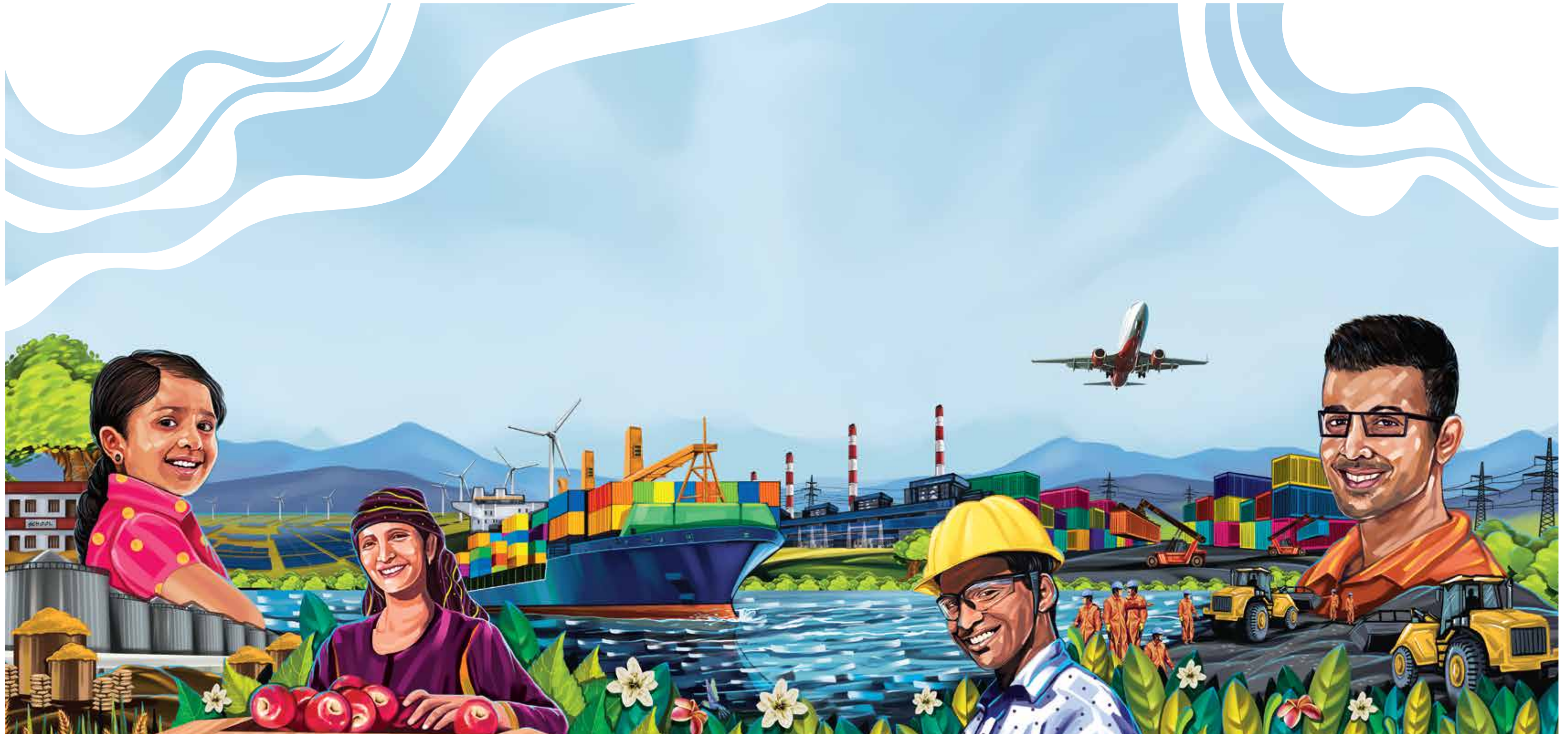




Growth
with
Goodness

adani





Growth,

the way it is
meant to be.

Growth, to us, isn't about the businesses we're involved in. Growth is about the real impact we can create. It's about the lives we can touch, the communities we can nourish, the future we can inspire. With our sheer size of operations, we have been able to reach out to the remotest of geographies with ease. Be it power transmission or solar energy generation or agri logistics, we go for large scale execution that benefits millions of Indians. We are proud of this quality of our operations, which we have consciously extended beyond our businesses, to impact healthcare, education, employment generation, and creation of sustainable livelihood for the communities that deserve them. It is the belief that growth can lead to goodness, which inspires us and drives us.

Not India's
largest
integrated
organisation,
but India's
largest
goodness
creators.

Racing ahead of others can surely reserve the apex seat, but how far will it take us is a question that keeps surfacing in our retrospection. We believe that the Adani Group is not in the business of Resource, Logistics, Energy and Agri, rather it strives to transform lives by means of creating opportunities for employment and a sustainable livelihood using our business as the medium to attain these goals of goodness. For us, the title of the largest integrated organisation doesn't ring a bell; the day we come to be known as the largest changemakers is the day we will achieve our purpose, our philosophy and our vision of 'Nation Building'. We want our achievements to become the beacon of goodness, moving lives, bridging oceans and bringing the world closer to millions. We believe our efforts, unless they enlighten lives, are futile. Headquartered in Ahmedabad, India, the Group has operations across the world and owes its success and leadership position to its core philosophy of Growth with Goodness.

To bring out the goodness there is in the world, it helps to start with the self. Our vision and values define this goodness.



Vision

To be a world class leader in businesses that enrich lives and contribute to nations in building infrastructure through sustainable value creation.



Courage

We shall embrace new ideas and business



Trust

We shall believe in our employees and other stakeholders



Commitment

We shall stand by our promises and adhere to high standards of business

When it comes to choosing a path towards growth, we choose the sustainable route.

At Adani Group, sustainability goes beyond a tick-in-the-box. It is an essential step towards the future and our goal of Nation Building. Every partnership, every investment and every initiative at the Group has been established keeping sustainability at the heart of our approach. In alignment with these beliefs, we express our commitment to the Sustainable Development Goals (SDGs) set by the United Nations with a focus on areas in which the Group is uniquely positioned to create sustained and scalable impact.

We have undertaken a rigorous mapping of our emissions and planet-related metrics for all our businesses and will adhere to transparency in our environmental footprint and actions through globally reputed disclosure and validation platforms.

For each of our businesses, we also aim to be sector leaders in reducing direct emissions, source renewable energy and work with our value chain partners to reduce our indirect emissions.

To reiterate our commitment to sustainability, we are continuously enhancing these initiatives further and all future investments have been aligned with key focus on preserving the environment. Our aim is to use the best possible technologies and resources to create solutions that not only bring growth, but goodness too.

Sustainable Development Goals



Environment

- Climate ambitions and disclosures in alignment with CDP, TCFD and SBTi
- Certified environment management system ISO14001
- Externally Assured Public Disclosure on auditable standards developed by GRI & IIRC
- Energy management system ISO50001
- Biodiversity Management and Conservation Plans

Social

- 'Zero Harm Culture' approach to Safety
- Promoting diversity and inclusion
- Skill development and Sustainable livelihood promotion
- Signatory and annual progress report to UNGC
- Certified Safety management system -ISO 45001
- Commitment to social accountability -SA8000
- Certified Quality Management system ISO 9001

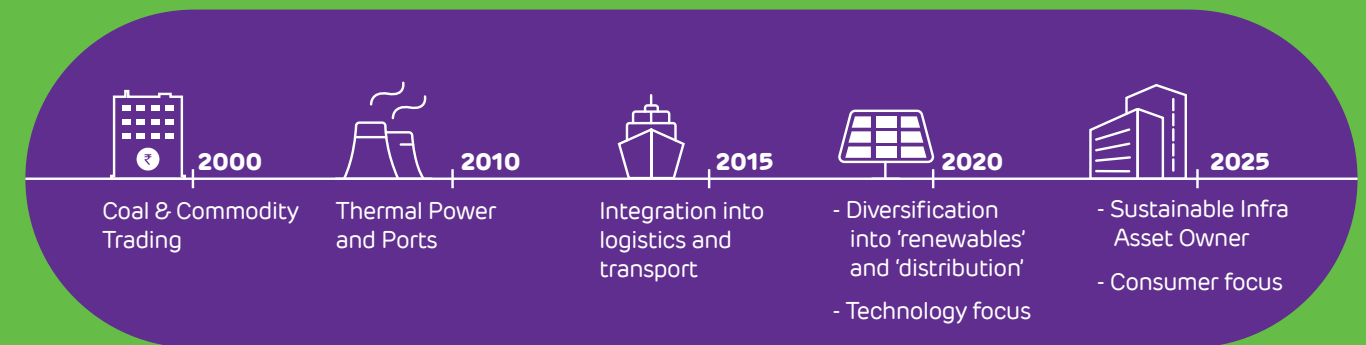
Key Milestones:

- 25 GW of renewable power generation capacity
- SBTi commitment and target setting
- Water Neutrality and alliance for water stewardship certification
- Signatory to IBBI

Governance

- Policy driven and top down approach
- Code of Conduct for all areas
- Diversified Board in all BUs
- Enterprise Risk Management (Basis COSO principle)
- Zero waste to landfill at sites
- ESG Disclosures in alignment with relevant national and international platforms
- Touching 3 million+ lives in areas of education, healthcare and livelihood

Journey Towards Sustainability



Going Forward: Adani's ESG Goals by FY-30

- Become world's largest renewable power generating company by 2030
- Align or exceed India's NDC target of achieving 33-35% emission intensity reduction
- Over \$20 bn investment in RE Generation, component manufacturing and Transmission & Distribution
- First port business in India to get to operational Net Zero by 2025
- First Indian Data Center Company to power all its data centers with renewable energy

Creating immense value by keeping pace with the changing times.

Phase 1

Ports to logistics platform



12 ports in India, 5 logistics parks –Largest transport utility



13 GW of thermal power generation capacity



AWL the largest range of edible oils range with other FMCG

Phase 2

Energy and gas utility platform



18.8k CKT km of transmission line, including longest HVDC line



Over 19 GW* of renewable power generation capacity portfolio



71 districts, in gas distribution network

Phase 3

Transformational opportunities to provide the quantum leap



8 airports in India



Harnessing expertise in infra, to cater to the growing demand of digital economy



Wastewater treatment & desalination projects

Uplifting lives in more ways
than one by being a sustainable value creator

adani

Transport & Logistics Portfolio

Adani Ports and Special
Economic Zone Ltd.

North Queensland Terminal

Sarguja Rail Corridor Pvt. Ltd.

Energy & Utility Portfolio

Adani Transmission Ltd.

Adani Green Energy Ltd.

Adani Power Ltd.

Adani Total Gas Ltd.

AEL: Incubator

Adani Airport
Holdings Ltd.

Adani Road
Transport Ltd.

Adani
Water Ltd.

Data Center

Defence and
Aerospace

Marked shift from B2B to B2C businesses

Adani Total Gas: Gas distribution network to serve key geographies across India

Adani Electricity Mumbai: Integrated electricity distribution network that powers the financial capital of India

Adani Airport Holdings Ltd: To operate, manage and develop eight airports in the country

Adani Wilmar: India's leading FMCG company serving customers pan-India

Locked in Growth

Transport & Logistics:

Airports and Road

Energy & Utility:

Water and Data Center

Diversifying businesses to meet our core objective of Nation Building

The virtues of speed, scalability and sustainability are essential for any organisation to achieve excellence and growth. With our diverse businesses and global outreach, we deliver smart solutions to our customers that are rooted in each of these virtues.

Contributing to India's Growth Story - Adani Group at a glance

Workforce
23,000+

Renewable Power
5.4 GW*

Transmission
13027 CKT KM

Cargo Handled across Ports
247 MMT

Solar Manufacturing
1.5 GW

Edible Oil
19.3% Market Share

City Gas Distribution
515 MMSCM

Agri Fresh
22000 MT

NBFC
32,500 Customers

Thermal Power Generation
12.41 GW (excluding ATLS 500 MW)

Realty
1.2 MN. SQ. M

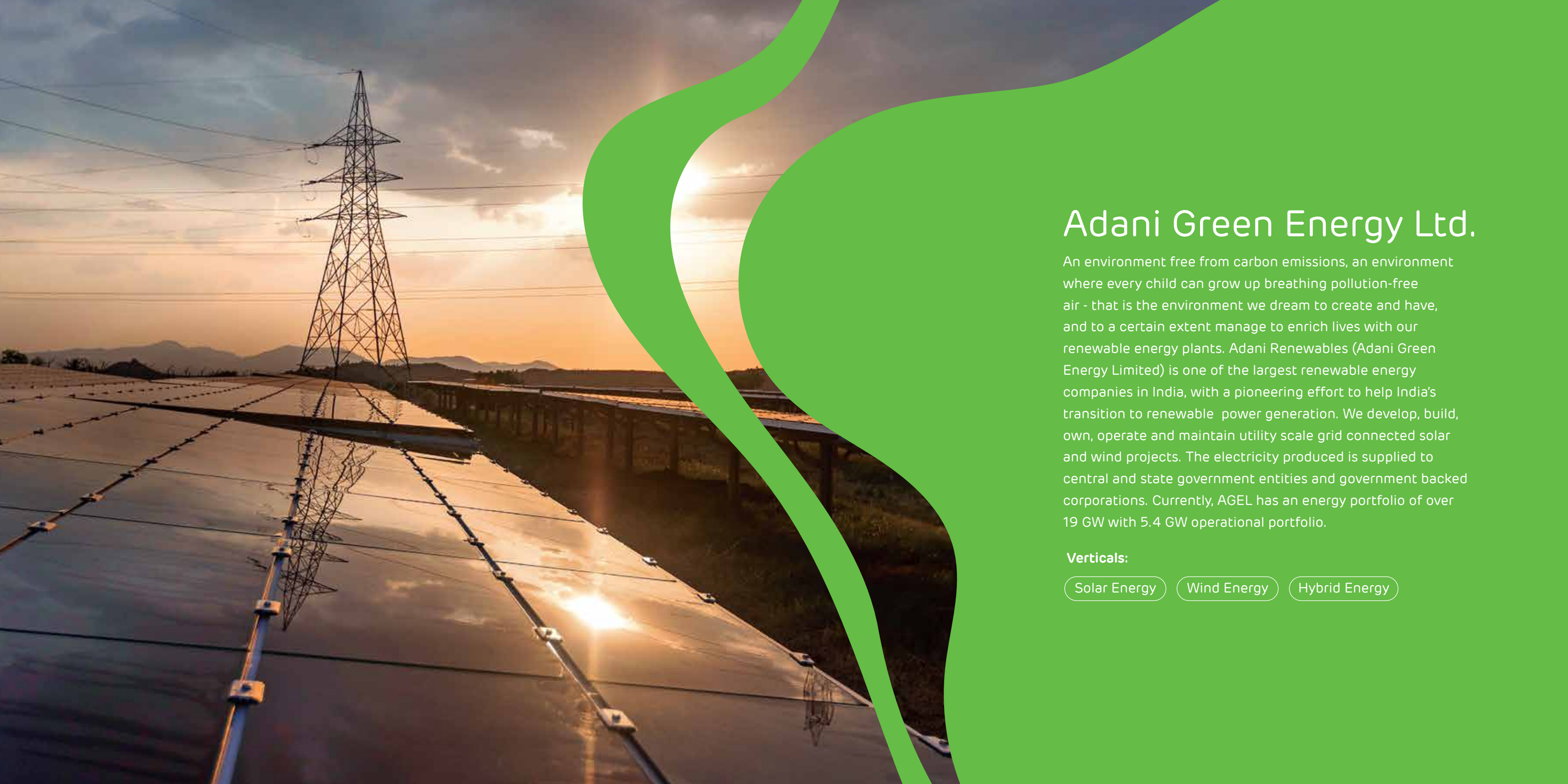
Integrated Resources Management
63 MMT

Mining Services
17.5 MMT

Passengers Handled at Airports
3.5 MN. SQ. M

Ports and Logistics | Power | Transmission | Renewables
Natural Resources | Agri Logistics | Edible Oil | Gas Distribution
Real Estate | NBFC | Aerospace and Defence | Roads, Metro, Rail and Water
Data Center | Airports | Agri Fresh

Note: Figures as per Annual Report FY 21 | *Operating Capacity as on October 2021



Adani Green Energy Ltd.

An environment free from carbon emissions, an environment where every child can grow up breathing pollution-free air - that is the environment we dream to create and have, and to a certain extent manage to enrich lives with our renewable energy plants. Adani Renewables (Adani Green Energy Limited) is one of the largest renewable energy companies in India, with a pioneering effort to help India's transition to renewable power generation. We develop, build, own, operate and maintain utility scale grid connected solar and wind projects. The electricity produced is supplied to central and state government entities and government backed corporations. Currently, AGEL has an energy portfolio of over 19 GW with 5.4 GW operational portfolio.

Verticals:

Solar Energy

Wind Energy

Hybrid Energy



Solar Energy

Nearly half a decade ago, we were the fastest of the starting blocks, having set up the largest solar power plant then in the world at Kamuthi in Tamil Nadu. AGEL's pursuit of continuing to grow our renewable portfolio has been second to none and we are probably driving one of the fastest ever de-carbonization programs given our existing footprints and robust pipeline. Our vision is to become the world's largest solar power company by 2025 and largest renewable power company by 2030. Our existing portfolio of renewable power generating assets stands at over 5.4 GW which is expected to increase with organic and inorganic growth plans.

The Adani Group has committed to investing over 70% of its budgeted Capex of the energy vertical into clean energy and energy-efficient systems. As a testimony to our commitment, our renewable energy portfolio in FY-17 was 748 MW - which saw a 48% growth every year - resulting into 3470 MW in FY-21. Another benchmark established during the year was the French energy major Total SA's investment to acquire 50% stake in entity housing 2148 MW operational solar projects.

Wind Energy

Harnessing the power of wind energy can provide RE power to the grid throughout the day with relatively higher CUF. We develop, build, own, operate and maintain utility-scale grid-connected wind farm projects and generate revenue through the sale of electricity to central and state government entities and government-backed corporations.

For wind project development, we continuously evaluate various regions of the country for wind

resource potential. We have already installed many wind-masts pan-India in resource-rich areas of our country. This has enabled us to confirm the site wind resource potential and allows micro-siting.



Adoption of higher efficiency machines, farm-level aggregation of wind machines, advanced algorithms for resource identification, and optimization of last-mile connectivity of wind turbines has led to enhanced efficiencies.

Hybrid Energy

Variability in solar and wind generation has emerged as a concern in large-scale adoption of renewables, especially after it contributes a major share in the energy mix. The hybridization of wind and solar plants is a developing solution that will reduce this variability due to complementary nature of their generation profile - solar generation is higher during the day, while wind generation can be higher in the night.

Hybrid projects would have much higher capacity utilization, thus, removing the intermittency challenge. Such projects also enjoy the additional benefit of a reduction in costs associated with sharing transmission lines. AGEL's approach of thorough inspection to identify good locations for hybrid energy and creating a proactive transmission plan alignment with in-depth insights about resource/generation potential has become the largest hybrid portfolio owner in the country.

Our USPs

-  Deep know-how of regulatory landscape
-  Well established relationship across energy ecosystem
-  Timely execution of large or complex assets
-  Operational expertise
-  Geography spread
-  Competitive project cost



Adani Ports and Special Economic Zone Ltd.

Everyone has a growth story. But when the story results in the upliftment of the lives of farmers and their families, or small-scale businessmen and their customers, the nation and its future, it advances into a goodness story. Adani Ports and Special Economic Zone Ltd. is bridging India to the world, erasing all limitations of geographies with faster, more efficient movements.

Verticals:

Ports

Logistics

Agri Logistics

SEZ



Ports

Adani Ports and Special Economic Zone Limited (APSEZ) is the largest commercial port operator in India, contributing to the country's growing trade. Its spread across 13 domestic ports in seven maritime states – Gujarat, Goa, Kerala, Andhra Pradesh, Maharashtra Tamil Nadu, and Odisha – lend it a national presence. The port facilities are equipped with the latest cargo-handling infrastructure which is not only best-in-class, but also capable of handling the largest vessels calling at Indian shores. Our ports are equipped to handle diverse cargos – dry cargo, liquid cargo, crude and containers.

Logistics

Adani Logistics Ltd, a subsidiary of APSEZ is a pan-India end-to-end logistics services provider – asset and service based – across Container, Bulk, Break-bulk, Chemical, Auto and Liquid industries. It operates three logistics parks located at Patli in Haryana, Kila-Raipur in Punjab and Kishangarh in Rajasthan. With the ability to handle 600,000 twenty foot equivalent units (TEUs) annually, the Adani Logistics business is growing at a rapid pace.



Agri Logistics

Those who feed us deserve their fair share. We, at Adani ensure that farmers get their due credit for every drop of sweat they've shed in generating the best quality produce for the nation. We rely on our scale to bring about this goodness. Adani Agri Logistics is a pioneer in bulk handling, storage and transportation (distribution) of food grains, and in providing an end-to-end bulk supply chain solution to Food Corporation of India and various state governments. The company commissioned India's first modern grain storage infrastructure for Food Corporation of India in 2007. It commissioned grain silos in Moga (Punjab) and Kaithal (Haryana) to store grains, and established receiving silos in Mumbai, Chennai, Bengaluru, Kolkata and Coimbatore, cities connected through Adani's dedicated railway rakes.

SEZ

Spanning across an area of 15,000 hectares and located on India's vibrant west coast in the industrialized and investor-friendly state of Gujarat, is the Mundra Economic Hub, the gateway for Indian exports and imports. It is India's largest port-based multi product manufacturing zone.



Adani Transmission Ltd.

Transmission

The aim of goodness is not attained by ensuring unlimited availability of power but by generating happiness and creating sustainable living for people affected by it, while maintaining a greener environment for generations to come. Adani Transmission Limited (ATL), is one of the largest private sector power transmission companies in India with a presence across the western and northern regions of India. The company has been working towards helping people realise their dreams no matter what time of the day it be. We primarily aim at addressing the vast potential in India's transmission sector and our ambitious target is to set up 20,000 circuit km of transmission lines by 2022. We currently operate more than 13,027 circuit km of transmission lines and around 18,455 MVA of power transformation capacity. We have invested in the latest technologies, resulting in the highest network availability of over 99.87% in the country, which corresponds to the best global standards.

Electricity

A brighter future or a hopeful ambition, the path towards empowerment or yet another lit kitchen is when the fruits of growth are sweeter than growth itself and goodness fuels the journey forward. Adani Electricity Mumbai Ltd (AEML), a majority owned subsidiary of Adani Transmission Ltd is into Power Generation, Transmission and Retail Electricity Distribution. It serves over 3 million consumers spread across 400 sq. km in Mumbai and its suburbs with 99.99% reliability, one among the highest in the country. In the maximum city, dreams run the show, and for millions of Mumbaikars, the fast-paced life that is contrived to realise them, is powered by an uninterrupted supply of electricity. Adani Electricity meets close to 2,000 MW of power demand as Mumbai's largest and the most efficient power distribution network. It provides world-class customer care services with the help of advanced technologies. Adani Electricity plans to expand its presence in newer geographies in pursuit of India's vision of 'Power for All'.



Adani Total Gas Ltd.

Life feels no less than a celebration when one can return home to some piping hot comfort food after a long day at work. We make this joy possible with our network of over 8,000 km of pipeline distributing gas to kitchens across the country. With over 1,650 industrial units, over 4,80,000 households, over 3,300 commercial units and more than 215 CNG stations, Adani Total Gas Ltd is the largest private sector CGD player in India with significant growth opportunities. A focused 'Pure Play Gas Marketing and Distribution' entity, with its expanding network of pipeline promises to fuel the growing aspirations of the nation.

Verticals:

Residential PNG

Commercial PNG

Industrial PNG



Adani Power Ltd.

What more can power do than light up houses? It can brighten the future, not just of individuals but of communities at large, thereby creating a growth story ramifying throughout the country, one smile at a time. We, at Adani Power, remain at the forefront of addressing the nation's increasing demand for energy. For us, building a sustainable future isn't just about achieving business objectives, but more about the impact we can create and the lives we can light up.

Adani's thermal power portfolio comprises 12410 MW across four plants at Mundra, Tiroda, Kawai, Udipi, Raikheda and Raigarh. This makes the company India's largest private sector power player. The power generated here is witnessing businesses grow, literacy rise and livelihood flourish. For the world's first company capable to set up a coal-based super critical thermal power project registered under Clean Development Mechanism (CDM) of Kyoto protocol, this is just the beginning in the continuing journey of goodness.



Adani Enterprises Ltd.

Growth is entitled to change but the goodness that it shapes is everlasting. Adani Enterprises Limited, the flagship entity of the Adani Group, by operating as the fastest growing, diversified group with business interests across natural resources, agri storage infrastructure and services, edible oil, defence and aerospace, airports, data centers and solar module manufacturing, is ensuring the impact trickles down to the remotest corners of the country. When electricity reaches every household through timely availability of resources, access to basic necessities is enjoyed the way it is meant to be and a farmer is able to feed his family heartily only because he gets his fair share for delivering quality food grains, which is stored and distributed in the most efficient manner while providing a healthy cooking medium. Through Defence and Aerospace, we are committed to help India achieve self-reliance in defence & security. Turning India's transit gateways into world-class destinations, committed to offer the best-in-class airport infrastructure to passengers, ensuring the most seamless and secure airport experience. For us, the nation is brimming with opportunities that can help bring about a change. In doing so, we contribute to the creation of a better world.

Verticals:

Integrated Resources Management

Natural Resources

Adani Wilmar

Agri Fresh

Defence and Aerospace

Roads, Metro, Rail and Water

Solar Manufacturing

Airports

Adani Australia



Solar Manufacturing

Contributing to the nation's journey of becoming self-reliant in terms of Energy Security, we ventured into what is known to be the pathway to a solar revolution – Solar PV Manufacturing, in 2017. Adani Solar (Mundra Solar PV Ltd.) our PV manufacturing and EPC arm, India's first and largest vertically integrated solar company that offers products along with services across the spectrum of photovoltaics manufacturing and upto project development.

The state-of-the-art manufacturing facility with multi-level infrastructure is being optimized for scaling up to 3.5 GW of solar cells and modules under a single roof. The unit is located at one of the world's largest Special Economic Zones at Mundra, Gujarat and plays host to the entire solar manufacturing ecosystem from cell to modules, including ancillaries (EVA, Backsheet, Aluminium Frame & Glass) and supporting utilities. With projects over 250 MW commissioned and over 500 MW under execution, it is also India's fastest growing Solar EPC Company.

The cutting-edge technologies, with machines, equipment sourced for the best-in-class partners, help us achieve cost leadership, scale of operations and product reliability standards exceeding global benchmarks.



Adani Wilmar

Adani Wilmar Limited (AWL) is a joint venture incorporated in January 1999 between Adani Group - the leaders in private infrastructure and Wilmar International Limited - Singapore, Asia's leading agri business group. It is one of the fastest growing food FMCG companies in India. The company has the largest range of edible oils, spanning across the categories of Soya, Sun, Mustard, Rice bran, Groundnut, Cottonseed and the revolutionary Vivo oil. The company has extended its basket of offering with the introduction of soap – Alife. Besides oil, AWL has also forayed into packed Basmati Rice, Pulses, Soya Chunks, Besan and Wheat Flour. The product portfolio of Adani Wilmar spans under various brands along with their flagship brand – Fortune. Adani Wilmar Limited also caters to institutional demand through its industry essential range which includes bulk packs of consumer essentials as well as Lauric & Bakery fats, Castor Oil derivatives, Oleo chemicals and Soya value-added products.

Agri Fresh

Adani Agri Fresh established its presence in the farming sector through world-class packaging operations and storage facilities in Himachal and hi-tech farming set up in Gujarat. These services ensure selection of only the highest grade of fruit produce for storage and consumption. It pioneered the controlled atmosphere storage technology for apples, transforming the apple growing and storage ecosystem of Himachal Pradesh. This business model has helped apple farmers across the state in creating for themselves a flourishing livelihood. Adani Agri Fresh is also into retailing of fresh fruit under brand name of 'Farm-Pik' with strong grower base.





Natural Resources

Electricity is an essential tool to empower humanity, especially for a country like India where per capita power consumption is much lower than that of comparable nations. While progressive enterprises such as the Adani Group have taken a leap in promoting environment-friendly solar and wind power, fossil fuel continues to dominate country's energy mix. Natural Resources division of Adani Group caters to the energy and infrastructure appetite of an ever-growing nation, adopting the best responsible practices. The portfolio comprises of Integrated Resources Management, Iron Ore, Minerals, Bunkering, Mining, Cement and Aggregate Businesses.

We bridge the gap between demand and supply of coal through a combination of imports and responsible mining. Besides contributing to the domestic production with the help of environment-friendly practices, we have also developed a strong supplier base in Indonesia, South Africa, Australia, USA and Russia among other major coal producing nations of the world. Its success has enthused many more mining lease holders to embrace this progressive model to produce other minerals and metals efficiently and cost effectively. We continue to explore new opportunities with this emerging area and have diversified into production of iron ore to begin with. Our vision of achieving energy security for the nation is gradually transforming lives of local stakeholders across the nooks and corners of the country.



Defence and Aerospace

India aspires to be amongst the top five nations of the world in defence and aerospace, by reducing its current dependence on military imports, by bolstering defence manufacturing, through indigenous private defence firms to ensure an advanced infrastructure that works in line with the real heroes of the nation and those who devote their lives in the line of defence. Adani Defence and Aerospace leads Adani Group's foray into defence and aerospace manufacturing to play an instrumental role in helping transform India into a destination for world-class defence and aerospace manufacturing, aligned to the Make in India initiative. Driven by our values of Commitment, Trust and Courage, we are enhancing India's

defence and industrial capabilities and helping build a secure nation. We aim to achieve this by:

- Focusing on platforms and technologies of critical importance, to assert India's military competence and help meet emerging security challenges at our borders
- Collaborating with committed global partners for transfer of technology and skills
- Helping develop and grow the dynamic MSMEs, which is critical for a sustainable ecosystem in India
- Focus on capabilities critical for true indigenization including design, system integration, maintenance and upgrade in India



Airports

The Adani Group forayed into civil aviation sector with a vision to leverage its rich experience of building stellar infrastructure in transforming Indian airports. In 2019, it won the mandate to modernize and operate Airports Authority of India-run airports at six cities of Ahmedabad, Lucknow, Jaipur, Thiruvananthapuram, Guwahati and Mangaluru for 50 years as a concessionaire. Subsequently, it took over the control of three of these airports and began majority stake acquisition of the Mumbai International Airport Limited which includes the mandate to build the Navi Mumbai International Airport. Collectively, Adani caters to more than 100 million passengers per annum.

Airports presence across India:

Ahmedabad | Trivandrum | Lucknow | Mangaluru | Guwahati | Jaipur | Mumbai

Adani Realty

Your dream life lies beyond the carpet area of what you believe is possible. Adani Realty is one of the youngest arms of India's top infrastructure and development organisation- Adani Group. With a commitment to getting India at par with the most advanced countries around the world, we have begun development in our most promising cities; integrating the finest design aesthetics with cutting-edge construction technology. As part of the Adani Group, we have a legacy of Trust and Excellence we live up to; a fact that has driven us to achieve a lot in a relatively short period of time. Adani Realty has been developing residential, commercial and social club projects of over 0.8 mn sq. m in aggregate in Ahmedabad, Mumbai, Pune and Gurugram. Our aim is to revolutionize real estate, keeping in mind the varied aspirations and lifestyles of new-age India. Set apart by an abundance of land for development, meticulous planning, intelligent use of technology and the speed of execution, within a little over 10 years of our inception, we have delivered more than 1.2 mn sq. m of space to over 6000 families. Our vision is perfectly encapsulated in our philosophy of The Good Life; in which we have conceptualised lifestyles inspired by your biggest dreams and closest relationships. We have been recognized as one of Asia's top 100 brands and are committed to becoming one of India's leading super brands in the realty sector.



Adani Capital

Set up in 2017, Adani Capital is a NBFC and aims to position itself as a premium financial services firm in the country by fostering an inclusive entrepreneurial ecosystem. Adani Capital aims to empower micro, and small entrepreneurs like farmers, transporters and small businessmen by providing them tailored financial solutions and adopting best practices. It operates in over 100 branches in the states of Gujarat, Maharashtra, Rajasthan and Karnataka and has financed over 30,000 entrepreneurs borrowers. Adani Capital offers specialized financial products like Farm Equipment Loans, Commercial Vehicle Loans, Supply Chain Finance, Business and Corporate Loans.

Adani Housing Finance

Adani Housing Finance is the affordable housing finance division of Indian multinational organisation, Adani Group. It envisions the attainment of the "Housing for All" objective for the citizens of India. Adani Housing Finance aims to meet the housing needs for home aspirants through easy financing solutions and simplified lending processes. Operates in over 30 branches in the states of Gujarat, Maharashtra and Rajasthan and has financed over 3500 home owners. Apart from Home Loans, the company's product portfolio also comprises Loan against Property for the purpose of business expansion and personal use.

Adani Renewables - Australia

Whoever we are and wherever we live, we're all human and we all want the power to better our lives. That's why Adani is focused on delivering an energy mix of thermal and renewable energy that can guarantee current demand and help create a positive future for everyone. In Australia, our Rugby Run solar farm is switched on and delivering 65MW of electricity, enough to power 23,000 Queensland homes every year. This is part of the Adani Group's growing global renewable energy production portfolio of approximately 2,500 MW.



North Queensland Export Terminal

North Queensland Export Terminal (NQXT) is Australia's most northerly coal port. It is located north-west of Bowen in Queensland. Coal is exported from NQXT to Asia to generate affordable, reliable electricity and for steel-making and cement production. The terminal is owned and operated by Adani and has been operating safely, responsibly and efficiently for 35 years.

Carmichael Rail Network

The Carmichael Rail Network is a 200-km long multi-user railway that is being constructed in Central Queensland, Australia. The railway will connect the new Galilee Basin mining region with existing rail infrastructure and Adani's North Queensland Export Terminal. The Carmichael Mine will be the foundation customer for the railway. The railway has initial design capacity of 40 million tonnes per annum and capacity to expand.



Carmichael Mine

Adani company Bravus Mining & Resources is constructing the Carmichael Mine in the North Galilee Basin, more than 300km from the Queensland coastline and approximately 160kms north-west of Clermont in regional Queensland. The Carmichael Mine will produce 10 million tonnes of thermal coal per annum to meet demand for coal for electricity generation in India and South-East Asia. The mine project is creating vital jobs and business opportunities for the communities of north and central Queensland.



Venturing into new avenues

- Data Center
- Road, Metro, Rail and Water



Data Center

As India's internet economy continues to be on a surge, there is an increasing need to build data centers to ensure seamless, uninterrupted data consumption and storage.

The growing smartphone subscribers with rising monthly mobile data traffic, coupled with rising broadband penetration and increasing digital transactions per year - will create an enormous need to collect, store, process and distribute data.

We partnered EdgeConneX, a company with a decade's experience of serving global cloud service providers in mature markets and a flexible mindset to adapt to the local requirements when entering new geographies. The complementary strengths of the two companies shall help disrupt the industry with unprecedented scale, speed and quality.

Adani Enterprises Ltd (AEL) is the only company with inherent capabilities to build data centers across the country. At AEL, we are competitively placed with some key advantages, namely:

- Complete ownership of large land parcels across the country
- Project management capabilities and resources availability
- End-to-end power value chain (generation, transmission and distribution)
- Fiber connectivity and strong network connectivity
- Renewable power generation to ensure sustainability
- Strong policy advocacy credentials
- As a part of our initial plan, we intend to build data centers in NCR, Mumbai and Chennai

Road, Metro and Rail

To continue our nation building efforts, we remain committed to build Infrastructure to boost India's socio-economic growth. With multiple Infrastructure businesses established across India, we leverage our expertise in project management to build synergies for Road, Metro and Rail Infrastructure development. Adani Group is confident about positioning itself as a dominant player in the Roads, Metro and Rail sector with its extensive experience of developing infrastructure for National Highways, Expressways, Tunnels, Metro-Rail, Railways.



Water

Water remains an integral part of sustainable development initiatives. With growing concerns about supply and availability of water resources, policy makers are focusing on infrastructure projects that aid its conservation. We propose to build new Sewage Treatment Plants (STPs) and rehabilitate existing STPs. Along with that, we also focus on opportunities in areas of Irrigation Infrastructure Development, Large Water Supply & Water Distribution Projects and Desalination Projects to produce potable water for general consumption or industrial use.



Adani Foundation

Goodness is a practice that ought to be ingrained in those who truly believe in it. We, at Adani, leave no stone unturned to bring happiness and livelihood at every step of our journey towards Nation Building. The Adani Group invests about 2% of its total profit in social initiatives through its CSR arm, Adani Foundation, with an aim to lead the wave of goodness at grassroots level. It exhibits the humane, compassionate and benevolent side of the company. Adani Foundation is touching more than 3.7 million lives in 2410 villages across 18 states through its work in Education, Community Health, Community Infrastructure Development and Sustainable Livelihood Development.



1. Education

Adani Vidya Mandir, Ahmedabad (AVMA) is the first cost-free school in India to receive NABET Accreditation by the Quality Council of India, a benchmark in the field of education. Adani Public School, Mundra is now the first school in Kutch and Saurashtra region to receive the NABET accreditation. Adani Vidya Mandir in Ahmedabad, Bhadreswar and Surguja are schools that provide cost-free education to about 3000 students annually. Adani Public School in Mundra, Adani Vidyalayain Tirora and Kawai, Adani DAV Public School in Dhamra and Navchetan Vidyalaya in Hazira provide subsidized education to students. The Foundation has started special initiatives such as Gyanodyay for Digital learning (Godda, Jharkhand), Utthan for strengthening fundamentals (Pan India) and Amchi Shala for reviving government schools (Maharashtra)

2. Community Health

Adani Foundation firmly believes that ensuring and improving the overall healthcare of the citizens can directly result in the economic growth of the nation. There are 12 rural clinics across the nation that provide timely services to around 33,000 patients annually. The Foundation also operates Mobile Health Care Units (MHCU), providing on-the-spot medical

assistance to patients in remote locations. At present, the MHCUs attend to 2L people annually, on average. Health camps are organized at regular intervals which are seasonal/need-based to meet the specific needs of the community. The Foundation also provides health check-up cards to senior citizens from socio-economically marginalized sections under Vadil Swasthya Yojana. The green card is given to those with a family income of less than Rs. 2 lakh per annum to avail free healthcare services, while those with family income of more than Rs. 2 lakh per annum are given blue cards to avail healthcare services at the Adani Hospitals.

Gujarat Adani Institute of Medical Sciences (GAIMS) and G.K. General Hospital (GKGH): GAIMS is the first Public-Private-Partnership (PPP) endeavor between the Government of Gujarat and the Adani Education & Research Foundation. G. K. General Hospital (GKGH, attached teaching hospital) is the only multi-specialty modern teaching district hospital in Kutch. GKGH is often the last ray of hope for thousands of patients who come here from different parts of the district. It provides treatment to all socio-economic classes of patients, particularly the poorest of poor patients. On average, 1,700 patients take medical benefits from the hospital every day.

3. Sustainable Livelihood Development

Adani Foundation aims at promoting the growth and development of marginalized sections by promoting livelihood security. The programs span from skilling to offering support in market linkages to the creation of Self-Help Groups (SHGs) to the adoption of new and innovative techniques in crop production, and animal husbandry. It also supports bringing alternate livelihood to fishermen community. The Foundation is empowering women through creating over 200 SHGs, covering over 2000 women. These SHGs are undertaking various income-generating activities, ensuring additional income to families.

4. Community Infrastructure Development

Community infrastructure bears a direct impact on the standard of living and the micro economy of the community. Adani Foundation has worked towards improving the infrastructure in numerous rural and migrant populations.

Water Conservation: The Foundation has constructed 21 check dams, revived 374 farm ponds and deepened several streams across various geographies. This has helped boost the water storage capacity to 7871785 M3 and it has brought 18,200 acres of land under irrigation.

SuPoshan: SuPoshan is targeted towards breaking the cycle of anemia in women and malnourishment in children below the age of 5 years. SuPoshan Sanginis, who are from the community, ensure the right medical and social support to encourage mothers to adopt a healthy lifestyle. SuPoshan is spread across 12 states in more than 3.25 lakh households.

Saksham: Saksham or Adani Skill Development Programme (ASDC) is a skilling program that focuses on bridging the skill gap among the youth, make them employable and thus, contribute towards nation-building. The program is in line with the Government of India's Skill India Mission. Saksham has partnered with the National Skill Development Corporation (NSDC) and has trained more than 67600 plus young persons. Its innovative courses include simulator-based crane operation, 3D printing and welding through Augmented Reality. Currently, there are more than 65 Saksham centers operational across eight states in India offering skill training in 45 trades.

Swachhagraha: Swachhagraha, inspired by one of the largest pre-independent mass movements in India – 'Satyagraha', is aimed at inspiring people to get involved and take action towards 'Creating a Culture of Cleanliness'. The program focuses on four key themes, namely, Waste Management and Littering, Sanitation, Personal Hygiene and Toilet Etiquettes.

Udaan: Udaan encourages young minds to develop an interest in all sorts of enterprises and to encourage them to dream big in life. Adani Foundation takes students on an exposure visit to their power plants and ports, where the students get an opportunity to experience the scale of the businesses. More than 3.48L students and teachers from 5200 institutions have participated in Project Udaan.



Group Safety

Occupational Health & Safety (OH&S)

“One of the fundamental principles of **Growth with Goodness** is taking care of people through the realms of Zero Harm culture”

OH&S is an integral part of Adani's activities, policies, processes & business operations to achieve our OH&S Vision “To be the Globally admired OH&S Leader in the Infrastructure space”.

It is Adani's conviction to promote “Culture of Care” so that every activity is performed in a safe manner which facilitates continual growth and sustainability of our businesses. This is envisioned in our business theme “Growth with Goodness”.

We believe that Safety is one of the most consensual aspects within the Group and it is a subject that resonates with organizational values in improving the overall performance and growth for the organization.

#SafetyCulture

“**#SafetyCulture**” is the Adani's flagship brand identity for promotion of safety culture under which all Safety interventions, programs & engagements are incubated and deployed across the Group.



Responsive Safety Organization

Key Enablers to create Generative Safety Culture at Adani are established to ensure '**Top Down**' & '**Bottom's Up**' Approach.

- Adani Visible Leadership: 10 Commandments for establishing an effective safety culture through Visible Leadership.
- Globally benchmarked Group Safety Standards, Directives & Policy frameworks
- Flagship Safety Leadership Development Program – 'Awakening'.
- Design for Safety Concept for Adani Businesses
- 'Best in Class' Safety programs on Vulnerability Risk Assessment, Safety Risks Field Audits etc. for gaining competitive advantage.
- Positive Performance Culture evaluated through Safety Performance Indicator Scorecards.

Awards & Accolades, 2020-21

- Sword of Honour 2020 by British Safety Council for UPCL – Adani Thermal
- 5 Star EHS Excellence Award 2021 by CII – Adani Renewables
- Recognition for “Renewable Energy Health & Safety” by Global Safety Summit.
- Recognition by Rajasthan government in Factory safety award scheme 2021 for APRL, Kawai – Adani Thermal



www.adani.com

Adani Group
Adani Corporate House
Shantigram, S G Highway
Ahmedabad 382 421
Gujarat, India

Contact us:
info@adani.com
investor@adani.com

